

Ss Peter and Paul's Catholic Primary School



Learning to Value

Learning to Give

Learning to Achieve

Growing together in the Peace of Christ

INFORMATION BROCHURE FOR RECEPTION CLASS 2022



Welcome

Dear Parents and Carers,

We would like to take this opportunity to welcome you and your child to Ss Peter and Paul's Catholic Primary.

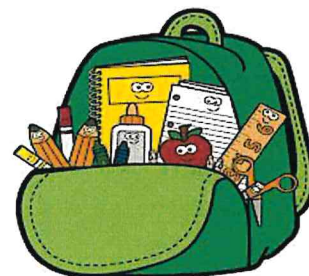
We are delighted that you have chosen Ss Peter and Paul's as your child's school and will aim to ensure your child is happy and fulfilled during their time with us. We will encourage, motivate and support them to reach their full potential. We are a warm, friendly school where the staff, governors and parish community work together to provide a caring and safe environment in which children thrive.

We hope this brochure provides you and your child with some useful information and answers some of the questions parents may have as they prepare for their child to start Reception class.

If you have any further questions about your child starting school, please do not hesitate to contact the school to discuss them further. We want the transition from Nursery to Reception to be as smooth as possible for both you and your child, and are looking forward to sharing in the many successes your child has ahead of them.

Yours sincerely,

Charlotte Chapman
Executive Headteacher



Contact Details:
Ss Peter and Paul's Catholic Primary Academy
Northumbrian Road
Cramlington
Northumberland
NE23 6DB

Main Office Telephone Number: (01670) 716343

School Email Address: www.ss-peterandpauls.co.uk



Can we introduce our fantastic team at Ss Peter and Paul's;

Executive Headteacher: Mrs C Chapman



Deputy Headteacher: Mr S Anderson



Reception Class teacher: Miss P L Welsh



HLTA's: Mrs M Marshall



Mrs A Timlin





Classroom Resources Assistant: Miss Amy Kennedy



Lunchtime Supervisors:



Miss Amy Kennedy



Miss Kim Burn



School Hours

All Reception children will begin school on Tuesday 6th September 2022.

The school day is organised as follows:

Doors open	8.45am
School starts	9.00am
Lunch	12.00-1.00pm
School ends	3.05pm



Before and After School Club Hours

Here at Ss Peter and Paul's we have set up a 'Before and After School Club'.

The children are offered a relaxing environment in which to spend time before the school day begins and again after the end of a busy school day.

The club is staffed by members of our support staff. It's managed by Mrs Marie Marshall and supported by Miss Kim Burn and Mrs Christine Bradley on a rota basis.

Breakfast Club starts	7.30am
School starts	9.00am
School ends	3.05pm
After School Club ends	5.30pm

The cost is £4.50 per session for the morning session. The cost for the 'After School' session is as follows:

Up to 4.00pm £4.50

Up to 4:30pm £6.00

Up to 5:00pm £7.50

Up to 5:30pm £9.00

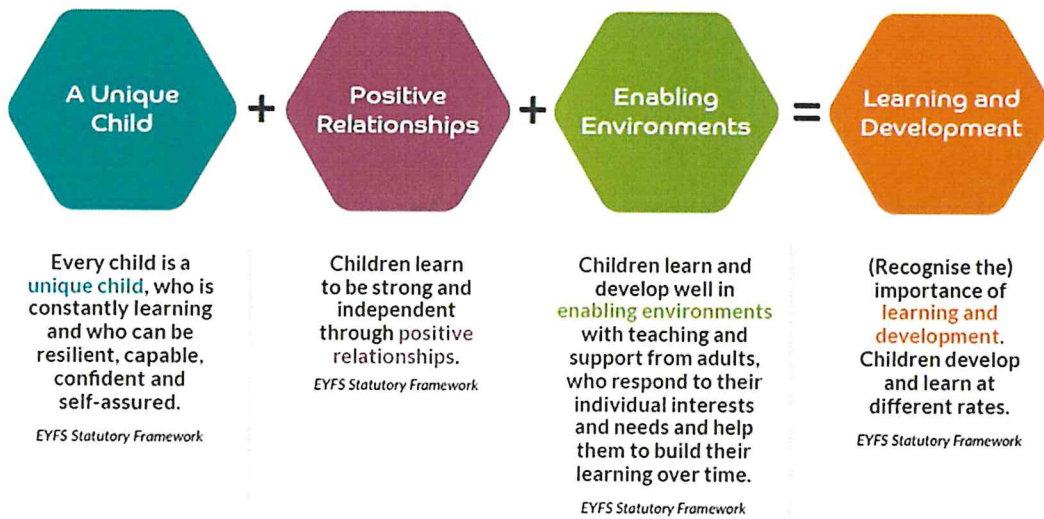


At Ss Peter and Paul's Catholic Primary Academy the curriculum is designed to: recognise children's prior learning, provide first hand learning experiences, allow the children to develop interpersonal skills, build resilience and become creative, critical thinkers.

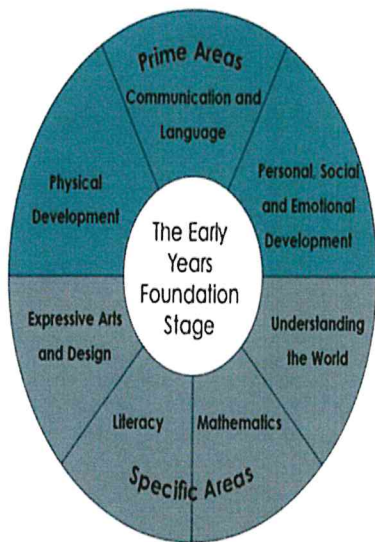
Our intent is to provide our children with an engaging, exciting and empowering curriculum that equips them for today and tomorrow.

The Early Years Curriculum

The EYFS is based upon four principles...



Children learn new skills, acquire new knowledge and demonstrate their understanding in 'The Seven Areas of Learning and Development'.



The Areas of Learning and Development

Prime Areas

The prime areas are the foundations that help to shape children's learning and development overtime.

Specific Areas

Practitioners must also support children in the four specific areas, through which the prime areas are strengthened and applied. (DfE, EYFS, 2021, p.8)



These areas are subdivided into the following:

Prime Areas of learning

Communication and Language

Listening and Attention

Speaking

Physical development

Gross Motor

Fine Motor

Personal, social and emotional development

Self Regulation

Managing Self

Building Relationships

Specific Areas of learning

Literacy

Comprehension

Word Reading

Writing

Understanding the World

Past and Present

Culture and Communities

Natural World

Mathematics

Number

Number Patterns

Expressive Arts and Design

Creating with Materials

Being Imaginative and

Expressive.

The Areas of Learning and Development affect each other. For example, developing communication and language will support children to understand and explain mathematical ideas. Developing physical skills will allow children to be more active explorers and so enhance their progress in Understanding the World. The more concepts they develop within Understanding the World, the more they will be able to relate to what they find in books and so support their development in Literacy. Experiences and activities that relate to Areas of Learning and Development, when they offer children opportunities to have autonomy and develop their own ideas, can also provide the contexts for children to practise their learning behaviours, and so reinforce the Characteristics of Effective Learning.

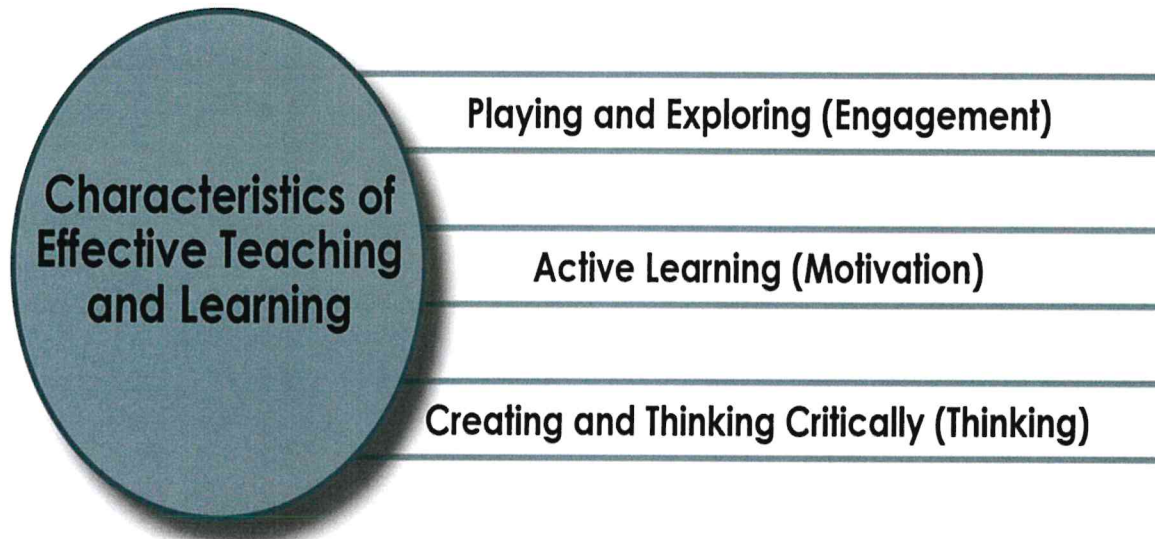
(Ref: Birth to 5 Matters)

The Prime and Specific Areas of Learning and Development and Characteristics of Effective Learning are all inter-connected. Different elements of learning are identified in the EYFS, to make the complex picture of learning clearer. But children's learning is not compartmentalised and many or all of these elements are in action at the same time as children interact with people and things.

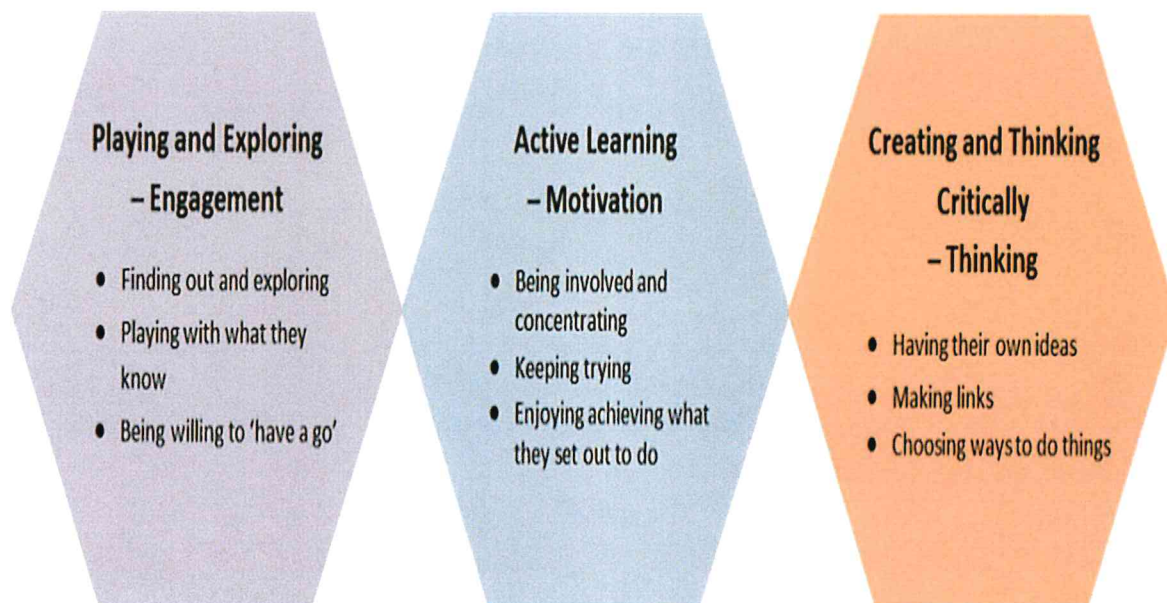
(Ref: Birth to 5 Matters)

The Characteristics of Effective Learning describe behaviours children use in order to learn. To learn well, children must approach opportunities with curiosity, energy and enthusiasm. Effective learning must be meaningful to a child, so that they are able to use what they have learned and apply it in new situations. These abilities and attitudes of strong learners will support them to learn well and make good progress in all the Areas of Learning and Development

(Ref: Birth to 5 Matters)



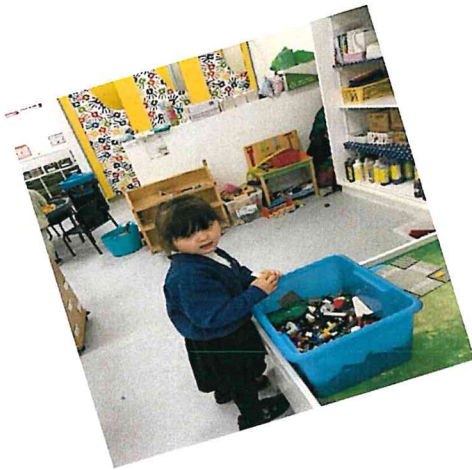
These characteristics of Effective Teaching and Learning are subdivided into the following:



In Reception at Ss Peter and Paul's by developing and extending characteristics of Effective Teaching and Learning through all Areas of Learning we aim for every child to experience success in the early years and this in turn will allow your child to become an effective learner for life.



Here is our amazing outdoor classroom!



And our fantastic indoor classroom!



In both classroom areas we put into practise all the characteristics of effective teaching and learning.



Assessment

The Reception Baseline Assessment (RBA) is a **statutory assessment introduced September 2021 onwards**. It provides a snapshot of where pupils are when they arrive at school. It will provide a starting point to measure the progress schools make with their pupils between reception and the end of primary school.

We undertake this baseline assessment within the first six weeks of their time in the Reception class and a judgement will be reported for each child by the October half term.

Throughout the Early Years we will continue to constantly observe, assess and record children's progress. This enables us to plan and provide activities relevant to each child so as to maximise learning.

'Evidence Me' is a fantastic tool which through photographs, notes and videos enables us in school to show the impact of children's learning by capturing your child's experiences, monitoring their development and highlighting as and when you can support your child to allow further progress. You can also use this tool at home to support our observations, so together we can get a complete picture of your child's development. **(Separate information and form will be given first week in September.)**

At the end of Reception the EYFS profile is completed. The EYFS profile is intended to provide a reliable, valid and accurate assessment of each child's development at the end of the EYFS. It is made up of an assessment of the child's outcomes in relation to the 17 early learning goal (ELG) descriptors.

For each ELG, teachers must judge whether a child is:

- meeting the level of development expected at the end of the EYFS (expected); or
- not yet reaching this level (emerging)

You will receive a written report in July stating what your child has achieved.

Special Educational Needs (SEND)

Where a child or young person is identified as having a special educational need (SEN), we will take action to remove barriers to learning and put effective special educational provision in place through the use of a Graduated Approach. In line with this, school will follow the Assess-Plan-Do-Review when supporting pupils with additional needs.

Partnerships with outside agencies such as Speech Therapists and Educational Psychologists will be developed if required. The earlier such concerns are addressed the better. Please do inform the school of any specialists currently involved with your child or if you would like a referral to be made.



Working in Partnership

We acknowledge the importance of parents as a child's first educators and aim to work together with parents. We attach great importance to the relationship between home and school in maximising the learning of your child. Children settle into school more quickly and make more rapid progress with their learning when parents and school work together in partnership.



Workshops

Over the year, parent workshops will be offered to share some of the ways in which we are teaching your children to learn new skills, such as phonics and maths. Please do support these workshops wherever possible.

Reading Together

Supporting your child's reading development is one of the most important things you can do for them over the coming year. Children who are supported at home and heard to read on a regular basis, make accelerated progress in reading. Reading contributes to all areas of learning across the curriculum. Your child will have a reading record for you and the class teacher to comment on the child's progress. This is a great way of communicating with staff about your child's reading.



Settling In

You can help your child to settle quickly into school by talking positively about the experience. It would be useful to encourage your child to carry out tasks for themselves, such as getting dressed, putting on their shoes and zipping up their coat. Independence is a great confidence booster. The children quickly want to manage these tasks alone to show how grown up they are!

Most children are excited about starting school and settle into the routine of the school day very quickly. However, some children may become upset when you leave – this is natural and our staff are very experienced at dealing with these situations.

Your child will be handed over to you at the end of the day. If collection arrangements change at any time please make sure you inform school.



Good Behaviour Code

From starting Reception, your children are supported to follow the rules and routines of our school to promote an environment which helps children develop into confident, well-motivated and hardworking pupils who enjoy school and have a high self-esteem, and who go on to achieve their full potential.



General Rules of the School – “The Golden Rules”

Do be gentle - Don't hurt anybody

Do be kind and helpful - Don't hurt people's feelings

Do listen - Don't interrupt

Do work hard - Don't waste your or other people's time

Do look after property - Don't waste or damage it

Do be honest - Don't cover up the truth

Outstanding behaviour makes highly effective teaching and learning possible.

We believe that every member of our school community should feel valued, respected and treated as an individual, in accordance with our school vision which states: 'Learning to Value: Learning to Give; Learning to Achieve and Grow in the Peace of Christ'

Attendance

Regular attendance at school is vital. The Reception year is fast paced and full of fun learning opportunities. If children are absent from school they are likely to miss out on lots of new learning and this will affect their progress. There are times, due to illness that your child is unable to attend school. If this happens please ensure that you contact the school office, stating the reason for your child's absence.

Punctuality

The school doors open at 8.45am and the school day begins promptly at 9.00am with registration. This is a very important part of the school day as children are recorded as present or absent at this time. It is also part of our daily routine and offers the children the chance to start the day in the best possible way. Please try and ensure your child arrives in good time.



Drinks and Food

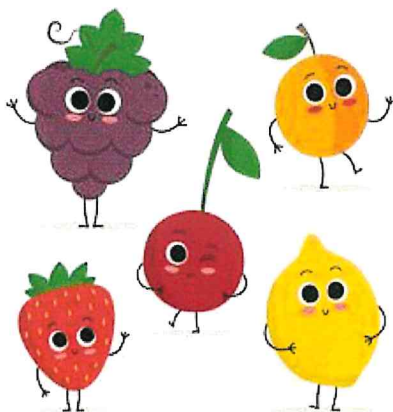
At Ss Peter and Paul's, we believe in healthy eating and offer varied and balanced meals daily. School dinners at Ss Peter and Paul's are freshly cooked on site and are of a very high standard. All children in Reception and KS1 are as a result of the governments 'Universal Free School Meals' scheme entitled to a free school meal.

If on benefits it would be beneficial to your child, you as a family, and school if you applied for **'Income Related Free School Meals' (Additional information and form can be found in your initial information pack.)**

For snack each day children are provided with a piece of fruit or vegetable free of charge as part of the 'Fruit in Schools' initiative.

Milk is also free to all children until they turn 5. If you wish your child to have milk after their 5th birthday there is a charge. Please ask the office if you wish to place an order.

Children should come to school with their own named water bottle which they have access to all day. It should have a sports cap to avoid spillage and should contain water only.





Clothing

We take pride in our appearance and wearing the correct school uniform is important. The school uniform helps ensure that pupils of all races and backgrounds feel welcome. It helps to protect children from social pressures to dress in a particular way; and nurtures cohesion, promoting good relations between different groups of pupils. Above all, the school uniform supports effective teaching and learning. Our school uniform consists of:

- Black trousers or black skirt (not leggings) or a black pinafore dress (blue gingham-style in Summer term);
- A white polo top or white, collared shirt;
- Blue jumper or cardigan with the school logo*;
- Black school shoes (not trainers);
- Black tights only (no long socks);
- No jewellery.

Pupils are expected to wear the following PE kits: -

P.E. kit (to be worn on your child's PE day, Reception's PE day is **FRIDAY**):

- Blue P.E. top with school logo*;
- Blue hoodie with school logo*;
- Black shorts (plain, without branding);
- Black jogging pants (plain, without branding - no leggings);
- Sports trainers (not fashion trainers such as Vans);

*Direct ordering to buy uniform is through Tots To Teams LTD - [Tots To Teamshttps://totstoteams.com](https://totstoteams.com)

The Hope Centre next to Manor Walks is a clothing bank that stocks good quality second hand uniform which includes Ss Peter and Paul's.

Our children spend a lot of time learning outdoors, in all weathers. It is therefore essential that children come to school dressed appropriately. We do provide 'Puddle Suits' for your child to wear but it would be appreciated if you could send in a named pair of wellies which will be kept in school for use in the outdoor area. This would allow the children to go out and about whatever the weather!

A sun hat and sun cream would also be a good thing to keep in your child's tray in the warmer months.

Please ensure you **name all items of uniform.**





Medication

It is your responsibility to ensure school is aware of any medical condition your child may have. Children with asthma must have an inhaler in school at all times. Prescribed medicine should be administered at home wherever possible. If medication is required during the school day it will be administered by a first aider upon completion of the appropriate forms by parents. All medicines must carry a dispensing label with the child's name and the correct dosage clearly shown. A dosage spoon should also be provided.

Parent, Teachers and Friends Association

At Ss Peter and Paul's we are fortunate to have a very hardworking PTFA. They run social events for the children and also undertake fundraising events. Their work is vital to the school and very much appreciated. In order to ensure the continued success of the PTFA we need parents to volunteer to be part of this group and help with the organisation and running of these events. If you are interested in finding out more, please contact the school office.

School Website and Facebook Page

The school website is a great way to keep up to date with what is happening in school. It is full of news and useful information about our school. Do take a look!

<http://www.ss-peterandpauls.co.uk>

You can also keep up to date using our Facebook Page. Search Ss Peter and Paul's Cramlington

And finally...

We know your child's time in Reception will allow them to master new skills, knowledge and understanding through fun and exciting experiences. We look forward to you embracing and enhancing your child's learning journey with us each and every day!